



Winter 2014  
Volume 19, Issue 3

- **Introducing JOHN STOBART**
- **Row, Row, Row Your Boat**
- **Port Hueneme Christens New Tug**

## Inside this issue:

- 1 Maritime Museum's Education Program Reaches Higher**
- 2 From the Helm**
- 3 Collection News**
- 4 Volunteer Page**
- 5 CIMM's Rowboats**
- 6 Maritime Happenings**
- 7 People Page**
- 8 On The Horizon**

## Maritime Museum's Education Program Reaches Higher

"Reach Higher" is a slogan adopted by Chapman College, but I don't mind using it, and neither will the college, for it describes the enormous strides the Museum's education team has made over the past 20-some years. They have truly reached higher, from the days when we went out to the schools to sing sea chanteys, do "show and tell" with a box full of marine artifacts, and assemble toy sailboats.

The program has evolved into a collection driven presentation of the history and importance of the Age of Sail more than 400 years ago. Masterpieces in the Seascape Gallery interpret what life was like in the 17th Century, and form the basis for introducing students to the elements of art. Models of historic ships recreate the Age of Exploration, and what it was like to be a sailor. The discovery of the New World by Europeans and Asians is presented through the stories of Drake, Cabrillo, Columbus, and others, and includes the voyages of the Chinese Treasure Ships. A Channel Islands module covers the geography, flora and fauna of the islands, particularly those in the National Park. An important partner in the program is the Channel Islands Marine Floating Lab, offering an on-the-water experience.

Known as the "enrichment program", it has evolved into four segments serving specific audiences. First is the original Grade 3-4-5 morning group. Second is an on-the-water 5th grade group to include the Marine Floating Lab, an all-day outing. Third is an abbreviated after-school program, and the fourth is a high-school module, currently under construction.

The on-the-water segment deserves special mention, as does the high-school; both are supported by grants.

With the objective of exposing students to the region's most important asset, the ocean, the Smith Foundation has awarded CIMM a \$25,000 grant (matched by the Museum) to provide fifth-graders an on-the-water experience. Combining the enrichment program and the Marine Floating Lab meets these grant requirements.

Realizing the importance of informing high

school students of the historical development of the Port of Hueneme and Channel Islands Harbor, the Heritage Fund, Smith-Hobson Foundation, and Union Bank of California have granted CIMM \$5,000 to develop a curriculum. The project awaits the completion of the Port of Hueneme exhibit, currently under construction.

How should the success of the program be measured? One way is to count the number of kids who go through the program in a school year; in some years it has been in excess of 3,000. Another is to take a longer view, that of building awareness and appreciation of the value of the Museum and its treasures among the students, their families, and their teachers. It's a long-term investment.

None of this would be happening, of course, without the dedication and interest of an all volunteer group of docents who have reached higher, far beyond what they learned in their basic docent training. These are exceptional people.

*David Leach*



Bill Conroy discussing the elements of art with a group from McAuliffe School



Carole Shoemaker introducing the Channel Islands National Park



Edited, produced and published quarterly by the

**Channel Islands  
Maritime Museum**

3900 Bluefin Circle  
Channel Islands Harbor  
Oxnard, California 93035  
Tel: 805-984-6260  
Fax: 805-984-5970  
Web: cimmvc.org

Email: vcmm@aol.com  
David Leach, Editor

**Board of Trustees**

Hon. Chair: Joyce Nelson  
President: William Buenger  
Treasurer: Bill Conroy  
Vol. Chair: Michelle Murphy

-----  
Chris Diaz  
Phil Drescher  
Arlene Fraser  
William Hair  
Pat Hart  
Gene Harter  
Jeff Hass  
Betsy Jackson  
Brad Marcus  
Gloria Mason  
Jerry Miller  
Don Mills  
Pat Wynhoff

**Museum Staff**

Exec. Director: Julia Chambers  
Registrar: Jackie Cavish  
Admin Asst: Karen Behnke  
Bookkeeper: Jody Kelly

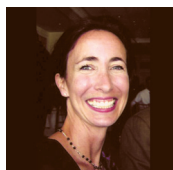
**Volunteer Positions**

**Officers**

Chair: Michelle Murphy  
Vice Chair: Mark Frees  
Sec. Treas.: Marcia Rubin

-----  
Binnacle: Norma Horn  
Education: Kay McElroy  
Speakers: Arlene Westefer  
Events: Martina Melero  
Shop: Michelle Murphy  
& Cat Wiggins  
Hours: Dave Smalley  
Library: Carol Shoemaker  
Marketing: Ken Wise  
Newsltr: Liz Caffrey-Campbell  
Red Book: Pat Hart  
Training: Jerry Leckie  
Telephone Tree: Glenna Hodgkin  
Field Trips: Mary Larkin  
Web Page: Chuck Carter  
Videographer: Chip Stevens  
Photos: Ron Sam/David Leach

-----  
Call Pipe Production:  
Alfred J. Lewis,  
studioNothing



**From the  
Helm**

**Julia Chambers**  
*Executive Director*

**2015: CIMM Sails Toward You Full Speed Ahead!!**

Rediscover the Channel Islands Maritime Museum and the history of sail in 2015! Our permanent collection of paintings, ship models, and artifacts is in the process of being complemented by new interactive exhibits that explore the maritime sources that established the roots of our modern day Oxnard and Ventura County.

2015 will be the year of the Upper Deck -- new permanent exhibits that introduce a variety of interactive opportunities to engage all visitors and offer a vital introduction to the world immediately around them. UD exhibits will be designed also to encourage visitors' imagination about the greater global possibilities of travel, discovery, and sheer vastness of possibility that adventurers and sailors have reveled in for centuries.

Our collaboration with the Port of Hueneme will come to a happy new fruition with the completion of an exhibit in mid-February which will illuminate the incredible scope of the industry of the Port and the roots from whence this global business evolved. It will consider the impact of the Port's contributions to our entire region and nation via imports, employment, as well as the key players who conceived initially of this global enterprise.

Navigation will be seen through new global eyes when this splendid exhibit is completed in the Spring of 2015. The goal of the exhibit is to expand the awareness of all visitors in terms of where they are in the world and their perception of how huge and majestic the earth truly is. Visitors will be encouraged to consider how to navigate from point A to point B, especially if you are on a sailboat and encapsulated in fog! We will trace the history of navigation, and learn how the ancient tools used can be a sailor's very best friend today.

This flurry of new activity follows a very produc-

tive 2014, the highlights of which includes the completion of the Nancy Nelson Davis Yard Garden, which enhances the Museum experience for all visitors. Our gorgeous collection of paintings expanded by several marvelous paintings in 2014. The Backhuysen and the Boudin seascapes have settled in beautifully to the Seascape and Gun Deck galleries, and we are very pleased to announce the Nelson Foundation's acquisition of a Montague Dawson painting of *The Atlantic Packet Ship Daniel Webster*. The steely blues of the waves provide a stunning contrast to the greens of its sister painting's watery depths on the wall adjacent to the new work. The size and scope of the canvas demands a viewing -- especially to witness the three-dimensionality of the ship forging its way directly toward the viewer, as though it might leap from the canvas.

2015 holds a delightful schedule of exhibits and events, including the continuation of several of our highly successful exhibits and programs. CIMM's Third Thursday Speaker Series has attracted marvelous and varied speakers and audiences in 2014, and promises more intellectual stimulation in 2015. Our Education Program offers highly coveted field trips for regional schoolchildren, helped along tremendously by a generous Martin V. and Martha K. Smith Foundation grant and our family of generous donors. Our Every Fifth Grader on the Water program has granted passage to the Museum and the waters of the Harbor for over a thousand local school children, many for the first time.

Please keep tuned to cimmvc.org for exhibit openings and other fabulous events at the cutting edge of Maritime culture. Every blessing for a year of clear sailing and blue skies ahead. Here's to a fantastic year in 2015 -- join us to celebrate all things Maritime!

*Julia Chambers*



## Collection News

**David Leach**  
Editor

### Introducing JOHN STOBART

Channel Islands Maritime Museum is fortunate to have in its collection four oil paintings by America's premier marine artist, John Stobart. Museum founder Harry Nelson purchased three of his pieces, while the fourth was a gift to the Museum by the artist, who has over the years become a friend and a supporter, having made several visits to Channel Islands Harbor and CIMM.

Born in Leicester, England, Stobart developed an interest in marine subjects on a voyage to South Africa in 1950 to work in his father's pharmacy, where he sketched and painted scenes in the twelve ports that the ship called upon during the voyage. Shipping companies took a liking to his work, and filled their board rooms with images of their newly-built ships, turning Stobart's talents into a viable business.

Stobart emigrated to Canada in 1957, at the invitation of a shipping company that took notice of his scenes along the Thames, and he spent the next ten years painting shipping along the St. Lawrence. Then he made the bold move to carry four of his pieces to New York City, where he became an instant success. The family that owned Kennedy Galleries gave him seven one man shows, all of them sell-outs.

Many books featuring Stobart's work have been published, but two stand out as encompassing his extensive body of work, and both are in CIMM's library, The **Rediscovery of America's Maritime Heritage** (known as the "brown book") and the **American Maritime Paintings of John Stobart** (the "blue book"). They're worth a look.

David Leach



Clipper Ship *Nightingale* Towing Out Past Greenwich in 1852



Vallejo Street Wharf, San Francisco, 1863



Nantucket Sunrise



Fisherman's Wharf, Channel Islands Harbor, Oxnard CA



## The Volunteer Page

**Michelle Murphy**  
*Volunteer Chair*

2014 was an exciting year at the Channel Islands Maritime Museum. The year ended with our traditional Holiday Party celebrating the Museum's dedicated volunteer group. The event, held at the Channel Islands Yacht Club, was sponsored and coordinated by John and Rose Hazeltine. In a setting of festive holiday decorations, 100 volunteers and guests enjoyed a delicious dinner and program honoring the contributions of the volunteers. Tom Johnston, 2013-2014 Volunteer Chair, was the Master of Ceremonies. With Tom at the podium, it was an entertaining evening, as he blended his skill as a master wordsmith with his inimitable British humor.

At the party, the 2014 Volunteer of the Year award was presented to Chuck Carter. Chuck joined the Museum in 2008. Since then he has served as the head of the Content Committee, has developed two Museum websites, he has installed and maintains our computer network, and is a skilled bartender at our special events. Congratulations and thanks to Chuck for all his contributions!

Many volunteers received recognition for their hours of service, (pictured).

December 2014 marked the end of the two year term for the Volunteer Officers. Tom Johnston joined the Museum in 2009, was named Volunteer of the Year in 2012, and Volunteer Chair the following year. Tom has retired from his role in leading the volunteer corps, but not from his involvement in a wide range of activities at the Museum.

Catherine Wiggins leaves as Secretary/Treasurer, but will be no less involved at the Museum as head of the Museum Store, member of the Education Committee, Planning Committee, and a floor docent.

The volunteers have elected new officers for the 2015 -2016 term. I leave my role as Vice Chair to fill the position of Volunteer Chair. In 2011, I moved from Cincinnati to Oxnard to live near my daughter and two grandchildren. It was a serendipitous visit to the Maritime Museum with my 7 year old grandson, that led to my involvement with the Museum. Quite simply, we both fell in love with the Museum. I immediately signed up to be a volunteer, and several years later find myself leading an incredible group of individuals who give so generously of their time and talent.

Mark Frees will serve as Vice Chair. Mark is also an Ohio native but was fortunate to move to Southern California in 1967. He joined the Museum as a volunteer in 2009, after a career as a physical therapist, realtor, art gallery manager, and sailor of a haunted boat. Mark has served as Secretary/Treasurer and enjoys sharing a wealth of information as a floor docent.

Marcia Rubin will serve as the new Secretary/Treasurer. Marcia is a New York native and recently retired as an IT business consultant with Kaiser. She joined the Museum in 2014 and works as a floor and front desk docent.

2015 will feature new exhibits and special events at the Museum, and as before, our exceptional group of volunteers will make it all happen!

*Michelle Murphy*



**Volunteer of the Year**  
**Chuck Carter**

**Audrey Chaiclin,**  
1,000 hrs



**Cat Wiggins,**  
1,000 hrs

**Randy Kirschke,**  
1,000 hrs



**Diane Dibble,**  
1,500 hrs

**Ken Wise,**  
2,000 hrs



**Tom Johnston,**  
2,000 hrs

**Bill Conroy,**  
5,500 hrs



**Pat Hart,**  
5,500 hrs



**Gloria Mason,**  
7,500 hrs



## Row, Row, Row Your Boat

In the presence of the sailing ship models, artwork and all the rest of CIMM's artifacts, the models of oared and paddled boats are sometimes overlooked. While searching for interesting oared watercraft, eight models seemed worth mentioning.

The lower deck has three of them, beginning with the *Roman Bireme*. This watercraft was probably invented by the Phoenicians. The name "bireme" comes from the Latin: "bi" meaning two and "reme," the Latin name for oars.

Also on the lower deck is the famous "Turtle Boat" which was a product of the wars between Japan and Korea. Some historians have referred to it as a "moving fort" due to its great size, its cannon power and its heavy wooden structure. While it had a sail, it was usually rowed by the crew in an attempt to get into the most advantageous fighting position.

The third oared model on the lower deck is the galley *La Reale de France*. This 17th century warship was commissioned by Louis XIV. Some historians have argued that she belonged to the king personally.

Climbing up the stairs is the Museum's upper deck. That's the home of our Chumash friends, the first known humans in west Ventura County. Alice's Restaurant on the Malibu Pier was the approximate southern boundary of the Chumash. They became famous for their navigation skills as well as their construction of *tomols* and *ti'ats*. These plank canoes were often created from redwood logs which floated from northern redwood groves. The upper deck is lucky enough to have both the *tomol* and the *ti'at* models for visitors to see. They made their famous canoes from drifting logs, local vines and yop (asphalt). They paddled as far as the coastal islands and greeted Cabrillo on his fabled sailing trip up the California coast.

Another interesting upper deck model is the *New Bedford Whale Boat*. This oared vessel was used during the east coast whaling era. When the whale vessel spotted a whale the sailor would yell "Thar she blows." That was the signal for the chaser craft crew to jump into their rowed vessel and chase the animal until they were close enough for the harpooner to kill it. Lucky for the whales, only three or four countries hunt whales anymore.

Moving to northern Europe, the upper deck is also home for a *Viking Longboat* model which was also propelled by oars. These watercraft were often used for Viking raids on European river villages along the Rhine and the Rhone rivers. As the stories go, when a raid was conducted the raiders often donned fierce looking costumes and gathered in a huddle similar to a football team before a game. After chanting they would grab their weapons and attack the village. These episodes were called "berserkirs." Supposedly that's where the English word "berserk" came from.

Another upper deck rowed model is the *reed boat*. These watercraft are among the oldest on planet Earth. Ancient Egyptians created them from Papyrus reeds. Even today they are used on Lake Titicaca which is located between Peru and Bolivia. As one might suspect these boats are only good for shallow bodies of water. The reeds get waterlogged so the boat is pulled ashore where the sun can dry it out.

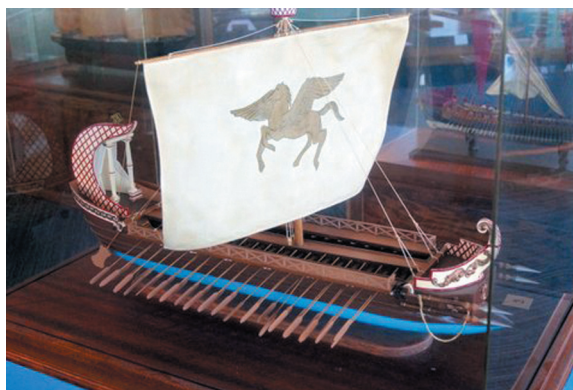
The eighth and last watercraft is not a model but a real rowboat, about a hundred years old. The markings on the boat suggest that it was a rental at Avalon on Catalina Island.

And that concludes our description of the CIMM's oared and paddled models. Be sure to check them out on your next visit to CIMM.

Bruce Mitchell



French Galley – 62 Oarsmen



Roman Bireme – 72 Oarsmen



## Maritime Happenings North and South Port Hueneme Christens New Tug

*Last June the Port of Hueneme christened its newest tug, the Simone Brusco. What follows is the press release announcing the event, written by the Port's Director of Marketing Will Berg.*

Over 40 Port, industry and community partners welcomed Brusco Tug & Barge's newest 78-foot by 31-foot ship assist tug, the Simone Brusco as it was christened at a noontime ceremony held at The Port of Hueneme today. Port Commissioners President Mary Anne Rooney and Vice President, Jess Herrera, joined in the celebration with the Brusco family along with several other dignitaries including the new US Coast Guard Captain of Port, Jennifer Williams, and Mayor John Sharkey of Port Hueneme.

The Simone Brusco is the third Robert Allan-designed ship assist tug built exclusively for The Port. The new vessel is a continuation of a line of ship assist tugs for the Longview, Washington-based Brusco Tug & Barge, named in honor of the late daughter of Bo and Teri Brusco, Simone.

"The Simone Brusco is a world class tug boat," announced Mike Fullilove, General Manager of Brusco Tug & Barge's Hueneme operations. "She increases our tug capabilities at the Port with horsepower provided by a pair of Caterpillar 3512 Tier III engines which produce a combined 4,000 HP that not only meet but exceed California emission standards."

Commenting at the ceremony Port Board President Mary Anne Rooney said, "The Brusco Tug & Barge are an important part of our Port family. The Brusco family always goes the extra mile, supporting our industry, our customers and law enforcement partners. They bring green clean technologies to our region, benefiting the communities and region we serve."

The Port's tugs routinely participate in joint emergency exercises with the Ventura County Fire Department. If needed, the fire department can attach their fittings into the Simone's discharge line sending water to help fight a building or ship fire.

Like her sister tugs, the Simone is outfitted with a forward electric Markey Render/Recover hawser winch as well as a 1,500 gpm fire pump and monitor. The Simone can not only pour water on a shipboard fire, but act as an auxiliary water source for shore-based emergencies as well. The Simone is

a day boat, designed for a crew of two or three. The tugs are crewed on a call-out basis to service the ocean borne freight transporting in and out of The Port.

Port CEO Kristin Decas remarked, "Vital to our Port's operations, Brusco tugs ensure the safe and efficient berthing of oceangoing commercial vessels. Brusco's highly maneuverable tugs are custom built for optimum performance within the confines of our unique port. Their commitment to The Port of Hueneme represents a 26 year partnership, and today their operations support the \$1.1 billion in trade related activity that comes through The Port."



The Port of Hueneme is one of the most productive and efficient commercial trade gateways for niche cargo on the West Coast. The Port is governed by 5 locally elected Port Commissioners. The Port moves \$8 billion in goods each year and consistently ranks among the top ten U.S. ports for autos and fresh produce. Port operations support the community by bringing \$1.1 billion in economic activity and creating 10,400 trade-related jobs. Trade through The Port generates more than \$69 million in annual state and local taxes, which fund vital community services

*Will Berg*



## The People Page October – December, 2014

### New Members

#### Captain

Allen Ball

#### Commander

Ken & Jane Thomas  
John Dugan

#### Lieutenant

James Williams

#### Family

Dick & Candace Reynolds  
Albert & Laura Holtz  
John Johnson  
Pam Halford  
Michelle Bara Ritter  
Beni Bara  
Steve Ondeckod

#### Individual

Anna Iker  
Jim Hensley  
Chuck McGohey  
Garold Scofield  
Peter Higgins  
Norman Bernstein  
Linda Hitt  
Bonnie Shelton  
Patricia Radis  
Loretta Collet

### Renewed Members

#### Commodore

Bradley & Marcia Marcus  
William & Elise Kearney  
Patricia Wynhoff  
Gloria Mason  
Barbara Sweetland

#### Captain

Bill & Florence Neumann

#### Commander

Alex & Melody Namikas  
Richard & Elvira Walton  
Robert & Cathy Scott  
William Buenger  
Linc & Glenna Hodgkin

#### Lieutenant

Gene & Karen Harter  
Kay McElroy  
Robert & Robin Sills  
Keith Adams  
Paul Bick  
Virginia Bibler  
Mark & Trina Hartmann  
Donald Dressel  
Norma Horn  
Draza Mrvichin

#### Family

Gayron & Kathy Downs  
Bernie & Connie Korenstein  
Gerald & Arlene Davis  
Bob & Mary Forney  
Carol Howe  
Lucien Lacour  
Linda Fisher  
Dick & Anita Levine  
Howard & Marcia Grey  
Gary Davis  
James & June Antonioli  
Tom & Jana Danza

#### Individual

John Belbusti  
Priscilla Ledesma  
Stephen Custer  
Walter Robles  
Lyndon Shaftoe  
Arlene Harris  
Patricia Ordelheide  
Peter Davies  
Patty Berry  
Jerald Bond  
Mark Frees  
Joyce Phaneuf  
Laurence Effress  
Gilbert Luna  
Paul Petrich, Jr.  
Frank MGinity  
David Weiss  
Shirlene Folk

### Donors

#### Restricted

Martin V. & Martha  
K. Smith Foundation (1) 25,000  
Martin V. & Martha  
K. Smith Foundation (2) 25,000  
Port of Hueneme 1,900

#### Unrestricted (>= 500)

Monford D. & Lucy L.  
Custer Foundation 10,000  
Wood-Claeyssens Fdn 10,000  
Ellen Morgan 5,000  
Sence Foundation 1,500  
Ronald Newburg Fdn. 1,000  
William Hammond 1,000  
NACE International 500  
Rich & Candace Reynolds 500

#### Annual Appeal

Betsy Jackson 200  
Diane Dibble 200  
Audrey Ezcurra 125  
Gary Farr 500  
Lorraine Marquart 1,000  
Mary Schwabauer 1,000  
All others (10, <= \$100)

#### Unrestricted

(12, <= \$150)

#### Music at the Maritime

Oxnard Harbor District 1,000  
Jerry Miller 200  
James Abing 100  
Margaret DeLam 12

#### Contributions in Honor of Marge Terjak

Anne Blanchard, Norma Horn, Viette Johnson, Tom Johnston, Jerry Leckie,  
Lorraine Marquart, Kay McElroy, Martina Melero, Nancy Mitchell, Joyce Phaneuf,  
Chip Stevens, Pat Wynhoff

We extend our heartfelt appreciation to the many donors to have contributed to the Channel Islands Maritime Museum with contributions less than \$100, whose names are too numerous to list due to space considerations. Our apologies if your name has been misspelled or omitted from this list in error. Please contact us and we will correct our mistake. Thank you.



## On The Horizon

### Ongoing

US Coast Guard Art Exhibit  
Through March 1

### February 12

Port Of Hueneme Exhibit Opens

### February 14

24th Anniversary Dinner

### February 15 - 16

President's' Weekend  
Patio Activities

### February 19

Speaker Series, 7pm  
*History of USCG*, Jay Galazin

### March

Celebration of the Whales

### March 19

Speaker Series, 7pm  
*Whales & Sea Animals*, Bob Perry

### April

High School Art Show  
Navigation Exhibit Opens

### April 18

Speaker Series, 7pm  
*Frigates, Pirates & Politics*,  
*Beginnings of the US Navy*, Jim Kosinski

### May/June

Nautica Art Show

### May 21

Speaker Series, 7pm  
*Scandinavian History*, Olaf Engvig

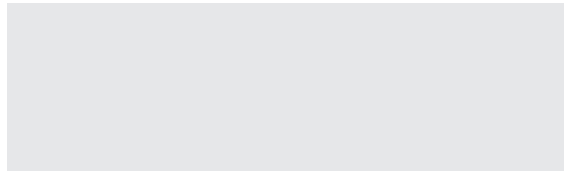
### June 18

Speaker Series, 7pm  
*All About Abalone*, Dr. Daniel Geiger

Channel Islands Maritime Museum, 3900 Bluefin Circle, Oxnard CA 93035

NON-PROFIT ORG.  
U.S. POSTAGE PAID  
OXNARD CA  
Permit #1551

## OR CURRENT RESIDENT



**This issue of *Call Pipe* is sponsored by Pat and Bob Hart**

### Leave a Legacy

Pease consider including the Channel Islands Maritime Museum in your estate planning. Your contributions are vital to keeping an important legacy alive and preserving a precious resource for future generations. If you have any questions or would like to learn about the many ways CIMM will use your gift, please contact Executive Director Julia Chambers at 805-94-6260 or [jchambers@cimmvc.org](mailto:jchambers@cimmvc.org).

### Urgent! CIMM Needs More Docents!

Keeping the doors open seven days a week requires a dedicated staff of people-oriented volunteers who have an interest in things maritime and want to share it with others. If that's you, call the office to sign up for the next training session.